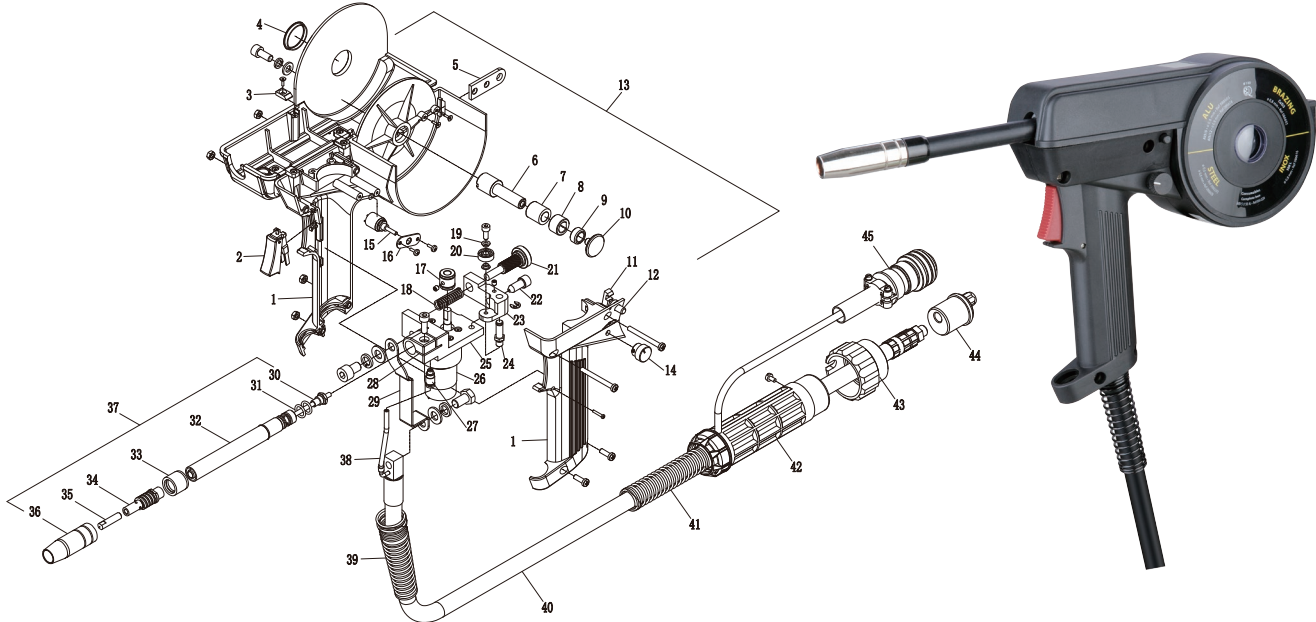


Spool Gun

- Type of cooling: Air Cooled
- Rating: 200A CO₂
160A Mixed Gas
- Duty cycle: 60%
- Wire size: Ø0.6-1.0mm



Components

No.	Part Number	Description
1	LWH2101	Gun Handle
2	EJ0003	Trigger Switch
3	LWH2111	Block
4	LWH2112	Cover
5	LWH2116	Hanger Hook
6	LWT2015	Spool Shaft
7	LMT2014	Bushing Resistance Rubber
8	LWT2013	Location Bushing
9	LMT2012	Adjusting Nut
10	LWT2011	Locking Screw
11	LWH2113	Hook
12	LWH2114	Press Button
13	LWH2100	Handle Assembly (1-12)
14	LWH2115	WFS Control Knob
15	Q8110*	Potentiometer 10KΩ
	Q8105	Potentiometer 5KΩ
	Q8101	Potentiometer 1KΩ
16	LWI2011	Potentiometer Housing
17	LWZ2011*	Drive Roll 0.8/0.9
	LWZ2020	Drive Roll 1.0/1.2
18	LWZ2018	Press Arm Spring
19	LWZ2016	Bushing
20	LWZ2017	Bearing
21	LWZ2015	Press Arm Bolt
22	LWZ2014	Inlet Guide
23	LWZ2013	Press Arm

Components

No.	Part Number	Description
24	LWZ2012	Press Arm Shaft
25	LWZ2019	Bracket
26	LZ2830*	Motor and Gear Box (30:1)
	LZ2820	Motor and Gear Box (20:1)
27	Q9104	Gas Connector
28	LWZ2000	Wire Feeder Assembly (17-27)
29	LWK2001	Conducting Bar
30	LWR11170	Liner Assembly
31	Q507618	O-Ring 7.65x1.78
32	LWF1111	Straight
33	EF1011	Insulator
34	LWD1101	Diffuser C/W Spring
35	EB1108*	Contact Tip 0.8mm M6x25 Ecu
	EB1109	Contact Tip 0.9mm M6x25 Ecu
	EB1110	Contact Tip 1.0mm M6x25 Ecu
36	EA1212	Nozzle 12mm
37	LWF11180	Gun Neck 180°
38	LWW2101	Internal Gas Hose
39	LWS2101	Front Spring Cable Support
40	LWL2140	Cable Assembly 4m
41	ES2201	Back Spring Cable Support
42	EH2201	Gun Plug Housing
43	EP2001	Gun Plug Nut
44	LWU2001*	Euro Gun Plug Without Control
	LTU2002	Euro Gun plug
45	MV0010	10 Pin Connector

*Denotes Standard Build