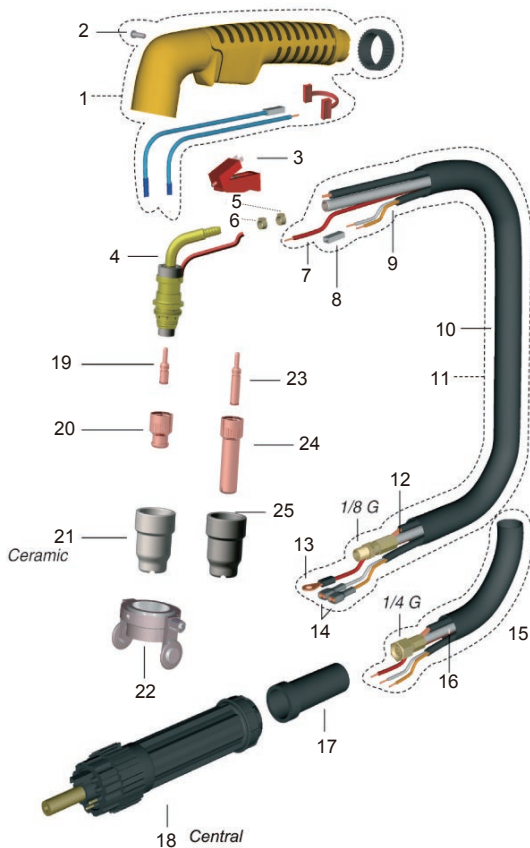


A51

- Ignition: HF
- Rating: 50A

- Cutting thickness: 10-15mm
- Duty cycle: 60%



Components

No.	Part Number	Description
5	EA0282	Hose Clamp $\Phi 9.5$
6	EA0285	Hose Clamp $\Phi 10.5$
7	BX0130	1.5mmmq-N07V- KD Red
8	BX0200	Female Trigger Wire Connector
9	BX0138	Control Cable
10	QB0096	Rubber Hose
11	PH0335	Cable Assembly
12	PH0340	Air-Power Cable 1/8G
13	BX0211	Nipple
14	BX0185	Female Faston
15	PH0336	Cable Assembly Central Adaptor
16	PH0341	Air-Power Cable 1/4G
17	CY0002	Cable Support
18	FY0023	Male Central Adaptor 7 Pins
19	PR0150	Electrode
20	PD0150-08	Tip 0.8
	PD0150-10	Tip 1.0
21	PC0150	Ceramic Outside Nozzle
22	CV0037	Carriage
23	PR0151	Long Electrode
24	PD0151-09	Tip 0.9
25	PC0151	Long Outside Nozzle

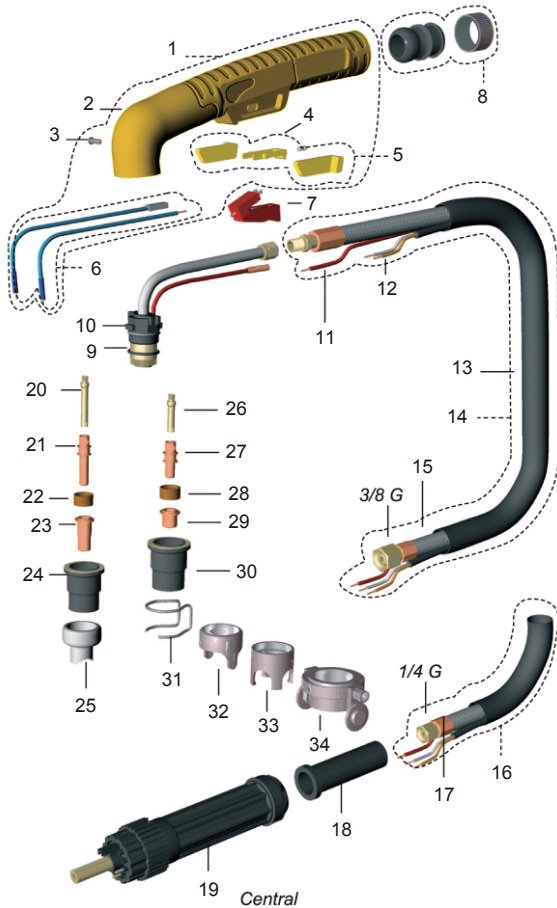
Components

No.	Part Number	Description
1	TP0120	Handle
2	EA0236	Screw
3	BX0020	Trigger
4	PF0150	Torch Head

A81

- Ignition: HF
- Rating: 80A

- Cutting thickness: 20-25mm
- Duty cycle: 60%



Components

No.	Part Number	Description
9	EA0125	O-Ring
10	PF0140	Torch Head A81
11	BX0125	Cable for Pilot Arc Per Meter
12	BX0138	Control Cable Per Meter
13	TQ0106	Outer Cover 20X22
14	PH0130	Cable Assembly 6m 3/8G
15	PH0203	Air-Power Cable 6m 3/8G
16	PH0132	Cable Assembly 6m 1/4G A81
17	PH0207	Air-Power Cable 6m 1/4G
18	CY0002	Cable Support
19	FY0023	Male Central Adaptor
20	FH0561	Long Diffuser
21	PR0115	Long Electrode A81 Long Life
22	PE0107	Air Diffuser A81
23	PD0106	Long Tip Φ 1.2 A81
24	PC0115	Outside Nozzle S54/A81
25	CV0201	Long Contact Cutting Attachment
26	FH0560	Diffuser
27	PR0109	Long Life Electrode A81
28	PE0107	Air Diffuser A81
29	PD0105-10	Long Tip Φ 1.0 A81
	PD0105-12	Long Tip Φ 1.2 A81
30	PC0115	Outside Nozzle S54/A81
31	CV0028	Stand Off Guide
32	CV0026	Two Pin Stand-off Guide S54/A81
33	CV0033	Four Pins Crown Shield
34	CV0051	Carriage S54/S75/A81

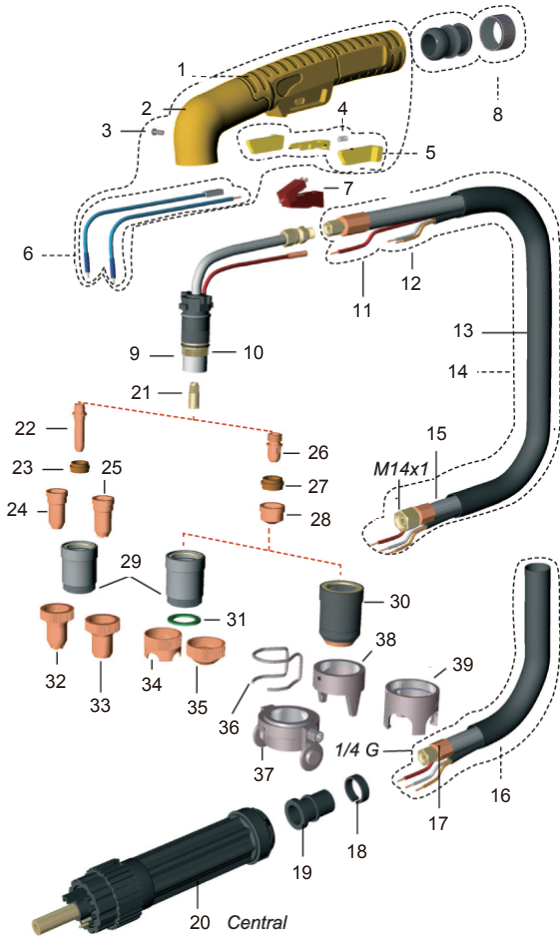
Components

No.	Part Number	Description
1	TP0110	S/A/CB Kit Handle
2	BW0345	Handle
3	EA0236	Screw
4	EA0313	Spring
5	BW0340	Key Safety Trigger
6	PT0201	Handle Spring Pins Kit
7	BX0020	Trigger
8	BW0310	Big Joint with Ring

A101

- Ignition: HF
- Rating: 100A

- Cutting thickness: 25-30mm
- Duty cycle: 60%



Components

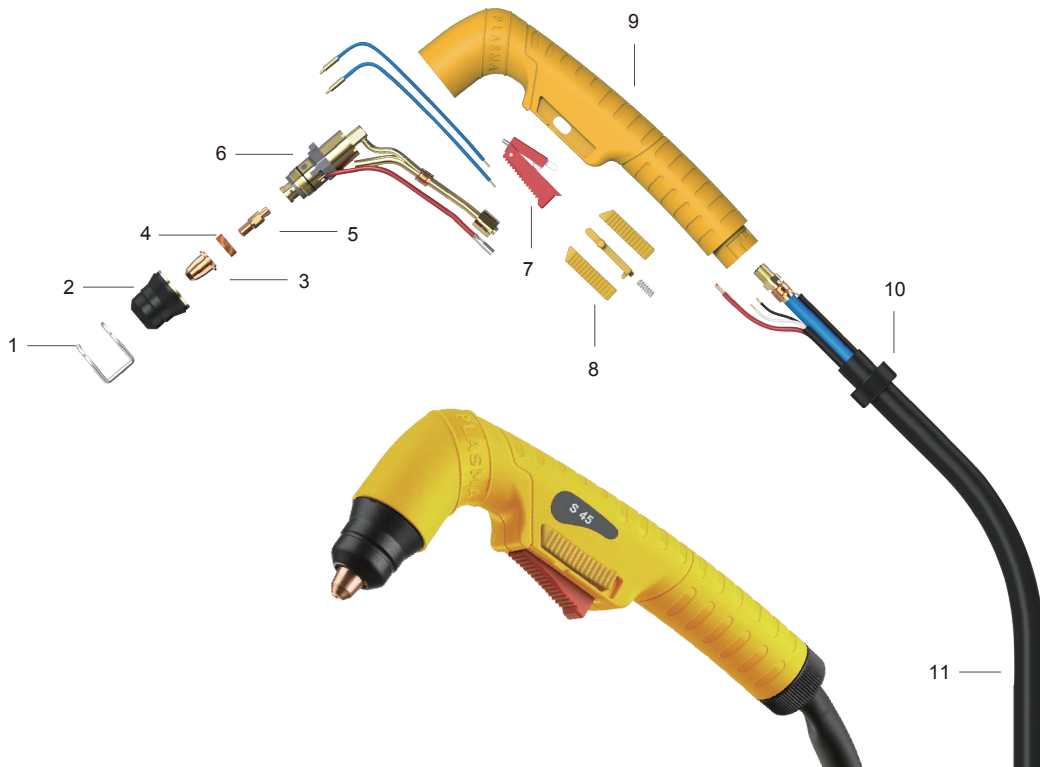
No.	Part Number	Description
14	PH0142	Rie-Power Cable 6m M14X1
15	PH0109	Rie-Power Cable 6m
16	PH0143	Rie-Power Cable 6m Central Adaptor
17	PH0108	Air-Power Cable 6m 1/4G
18	CY0036	Cable Support
19	CY0035	Cable Support
20	FY0023	Male Central Adaptor
21	FH0562	Diffuser
22	PR0116	Long Electrode A101
23	PE0103	Air Difuser A151
24	PD0117-14	Long Tip Φ 1.4 A101/A141
	PD0117-17	Long Tip Φ 1.7 A101/A141
	PD0117-19	Long Tip Φ 1.9 A101/A141
25	PD0111-11	Long Tip Φ 1.1 A101/A141
26	PR0101	Electrode A101
27	PE0101	Air Diffuser A101/A141
28	PD0101-11	Tip Φ 1.1 A101/A141
	PD0101-14	Tip Φ 1.4 A101/A141
	PD0101-17	Tip Φ 1.7 A101/A141
29	PC0113	Contact Cutting Nozzle A101
	PC0130	Contact Cutting Nozzle Long Life A101
30	PC0109	Outside Nozzle A101
	PC0111	HeavyDuty Nozzle A101
31	FH0297	Four Pins Crown Shield
32	CV0009	Long Contact Cutting Attachment
33	CV0008	Contact Cutting Attachment
34	CV0039	Four Pins Crown Shield
35	CV0023	Contact Cutting Attachment
36	CV0011	Stand Off Guide
37	CV0021	Carriage
38	CV0012	Two Pins Crown Shield
39	CV0014	Four Pins Crown Shield

Components

No.	Part Number	Description
1	TP0110	S/A/CB Kit Handle
2	BW0345	Handle
3	EA0236	Screw
4	EA0313	Spring
5	BW0340	Key Safety Trigger
6	PT0201	Handle Spring Pins Kit
7	BX0020	Trigger
8	BW0311	Big Joint with Ring
9	PF0145	Torch Head A101
10	EA0131	O-Ring
11	BX0125	Cable for Pilot Arc Per Meter
12	BX0138	Control Cable Per Meter
13	TQ0106	Outer Cover 20x22

S45

- Ignition: Non HF
- Rating: 40A
- Cutting thickness: 8-12mm
- Duty cycle: 60%



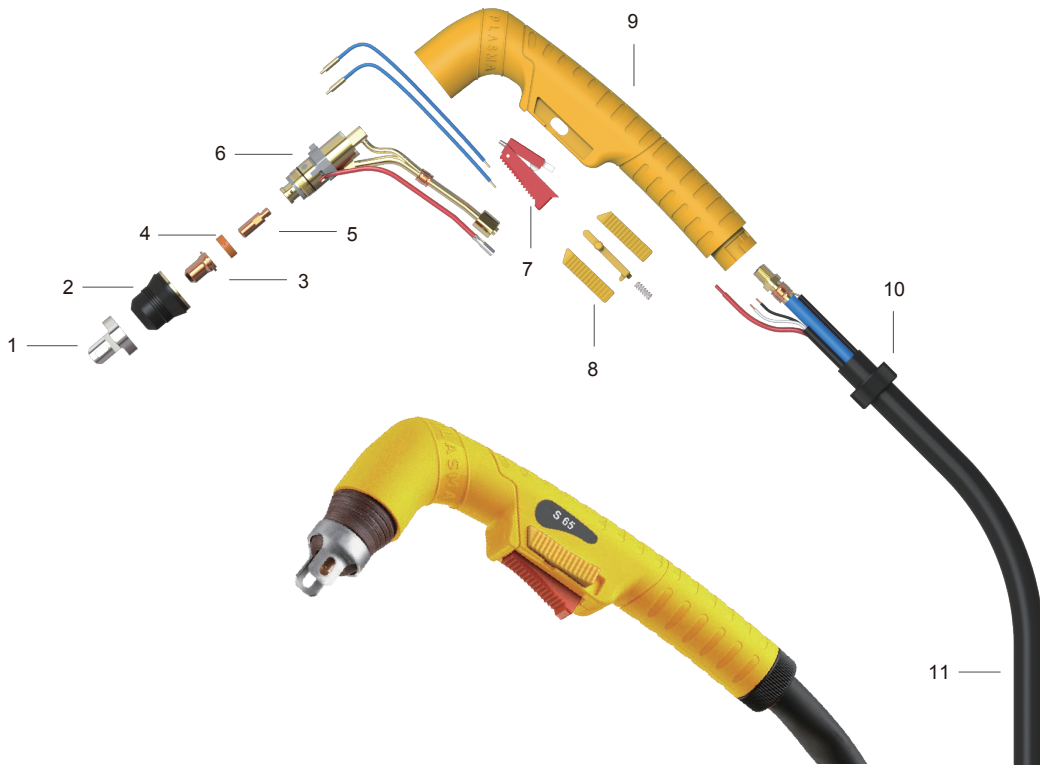
Components

No.	Part Number	Description
1	NCV0010	Stand off Guide
2	NPC0116	Retain Caps
3	NPD0116-06	Cutting Tip 20A
	NPD0116-08	Cutting Tip 30A
	NPD0116-09	Cutting Tip 40A
4	NPE0106	Swirl Ring
5	NPR0110	Electrode
6	PF0125	Torch Head Kit
7	BX0020	Trigger
8	PT0153	Key Safety Trigger
9	BW0440N	Handle
10	NBW0246	Handle Locking Nut
11	NPH0295-4A	Cable Assembly 4m
12	NCY0002	Back Cable Support
13	NBW0195	Back Handle
14	NBW0174	Locking Nut
15	NFY0018G	Central Connector



S65

- Ignition: Non HF
- Rating: 60A
- Cutting thickness: 8-20mm
- Duty cycle: 60%



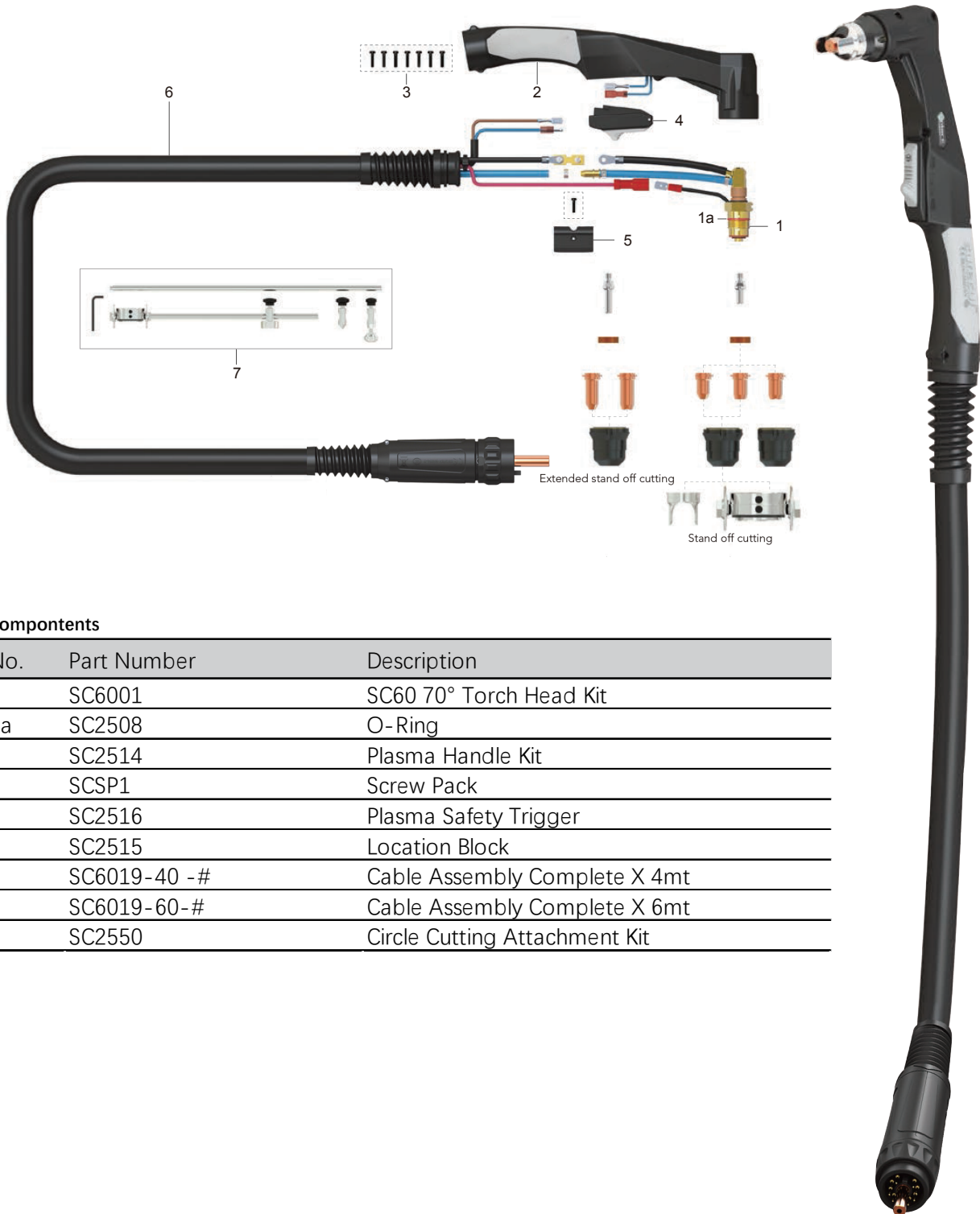
Components

No.	Part Number	Description
1	NCV1118N	Double Pointed Spacer
2	NPC0098	Outside Nozzle
3	NPD0098-08	Cutting Tip 40A
	NPD0098-10	Cutting Tip 60A
4	NPE0106	Swirl Ring
5	NPR0098	Electrode
6	NPF0128	Torch Head Kit
7	BX0020	Trigger
8	PT0153	Key Safety Trigger
9	BW0440N	Handle
10	NBW0246	Handle Locking Nut
11	NPH0307	Cable Assembly 6m
12	NCY0002	Back Cable Support
13	NBW0195	Back Handle
14	NBW0174	Locking Nut
15	NFY0018G	Central Connector



SC60

- Ignition: Non HF
- Rating: 60A
- Cutting thickness: 12-20mm
- Duty cycle: 60%

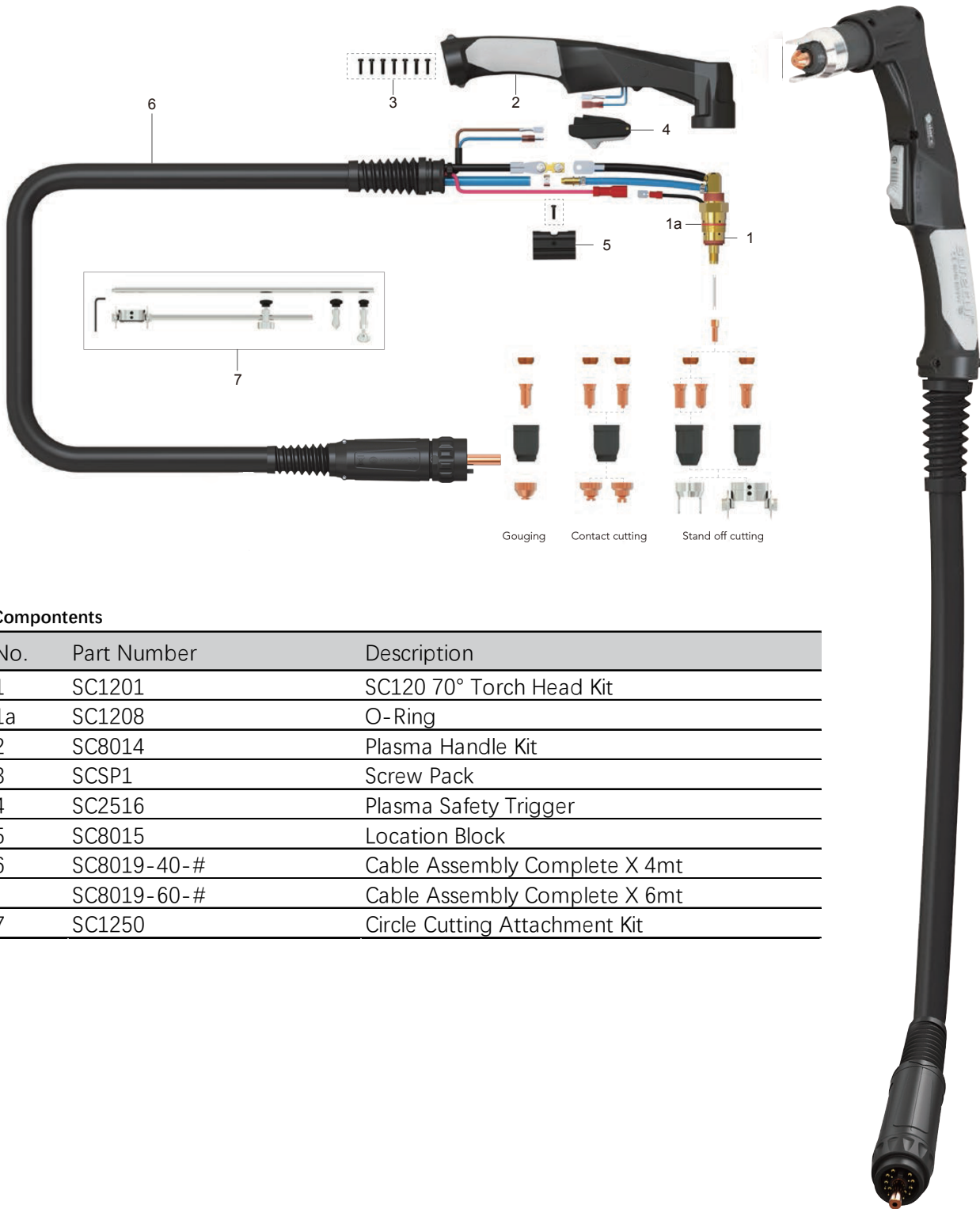


Components

No.	Part Number	Description
1	SC6001	SC60 70° Torch Head Kit
1a	SC2508	O-Ring
2	SC2514	Plasma Handle Kit
3	SCSP1	Screw Pack
4	SC2516	Plasma Safety Trigger
5	SC2515	Location Block
6	SC6019-40 -#	Cable Assembly Complete X 4mt
	SC6019-60-#	Cable Assembly Complete X 6mt
7	SC2550	Circle Cutting Attachment Kit

SC120

- Ignition: Non HF
- Rating: 120A
- Cutting thickness: 30-35mm
- Duty cycle: 60%



Components

No.	Part Number	Description
1	SC1201	SC120 70° Torch Head Kit
1a	SC1208	O-Ring
2	SC8014	Plasma Handle Kit
3	SCSP1	Screw Pack
4	SC2516	Plasma Safety Trigger
5	SC8015	Location Block
6	SC8019-40-#	Cable Assembly Complete X 4mt
	SC8019-60-#	Cable Assembly Complete X 6mt
7	SC1250	Circle Cutting Attachment Kit

